

台北金融中心約克滷水機更新控制中心講義



泰盛企業有限公司

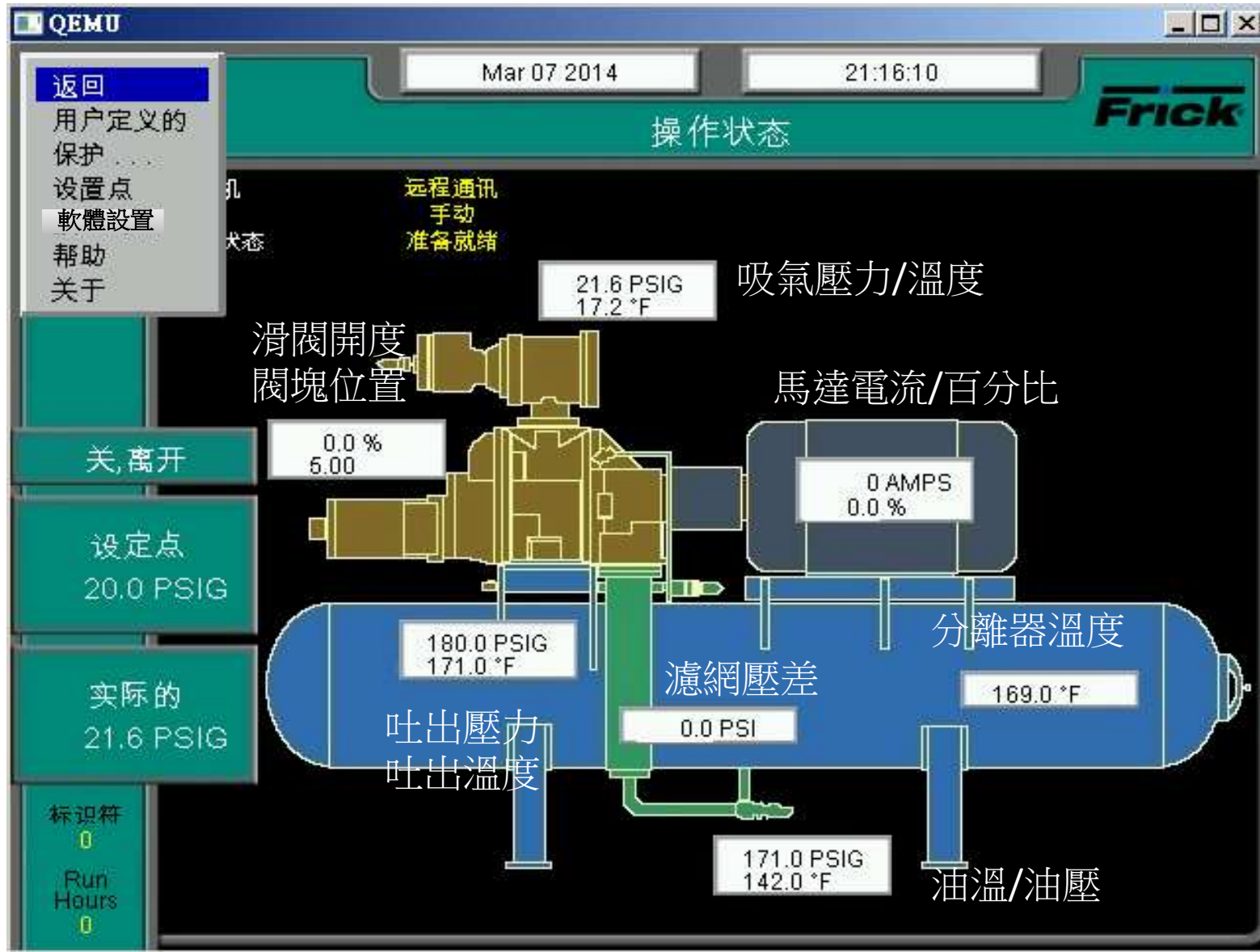
講師：蔡祥禎

03/15/2014

LEVEL-0操作目錄(菜單)

- 返回
- 用戶定義的
- 保護
- 設定點
- 軟體設定
- 幫助
- 關於

主畫面



用戶定義操作狀態

Mar 05 2014 10:21:18

用戶定義的 操作狀態

吸氣壓力	102.6 PSIG
吸氣溫度	71.8 °F
排氣壓力	115.2 PSIG
排氣溫度	78.6 °F
容積閥開位置	0.0 %
容積閥關位置	2.36
液位	11.1 %
壓縮機油壓	117.9 PSIG
靜檢程式壓力	116.7 PSIG
油分攔截溫度	88.0 °F
工藝/匯水出水溫度	44.8 °F
電機電流	0 AMPS
壓縮機油溫	70.7 °F
千瓦	0 KW

允許用戶定義值15

允許用戶定義值16

允許用戶定義值17

允許用戶定義值18

允許用戶定義值19

允許用戶定義值20

當前警告



歷史警告記錄



設定點

The screenshot displays a QEMU window with a Frick control interface. The interface features a teal header bar with the Frick logo on the left, a date and time display in the center, and a status indicator on the right. Below the header, the text '设置点' (Set Points) is centered. A table on the right side shows the set and actual values for two points. A floating window in the foreground displays two modes, both set to 32.0 °F.

Setting	Value
设定点 (Set Point)	20.0 PSIG
实际的 (Actual)	21.6 PSIG

Mode	Value
模式1 (Mode 1)	32.0 °F
模式2 (Mode 2)	32.0 °F

軟體設定



幫助

The screenshot shows a QEMU window titled "QEMU" with standard window controls. The interface has a teal header bar. On the left is the "Frick" logo. In the center, there are two white boxes: the first contains "Mar 07 2014" and the second contains "21:30:12". Below these boxes is the word "幫助" (Help). On the right side of the header, there is a status indicator "关, 离开" (Off, Away) and a pressure gauge showing "设定点 20.0 PSIG" (Setpoint 20.0 PSIG) and "实际的 21.6 PSIG" (Actual 21.6 PSIG).

KEYPAD KEYS

Following is a list of the labeled keypad keys and the actions that occur when they are pressed:

- [STOP] - When the compressor is running in Manual mode, this key immediately stops the compressor by placing it into Stop Mode. The compressor is stopped regardless of any other conditions.
- [START] - When in Manual Mode, this key places the compressor unit into the Start Mode for running.
- [INCREASE VALUE] - Increases Capacity.
- [DECREASE VALUE] - Decreases Capacity.
- [ALARM SILENCE] - Immediately silences a sounding alarm and disables the alarm annunciation device that may be connected to this panel.
- [MANUAL] - Changes the compressor mode from its current mode to Manual Mode.
- NUMERALS [0] - [9] - The numerical keys are used to enter a value

關於

